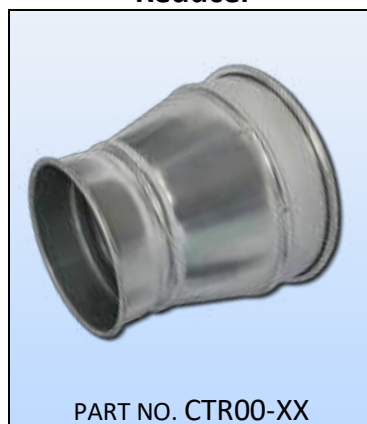


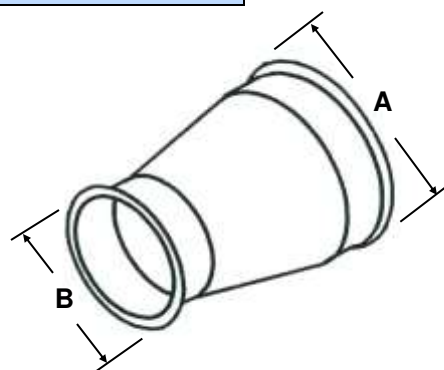
REDUCER

SIZE	PART #	GA.	WT.	REG. PRICE	35% OFF
4"	CTR04-XX	22	1.3	\$64.27	\$41.78
5"	CTR05-XX	22	1.5	\$65.46	\$42.55
6"	CTR06-XX	22	1.8	\$68.90	\$44.79
7"	CTR07-XX	22	2.0	\$69.38	\$45.10
8"	CTR08-XX	22	2.3	\$70.69	\$45.95
9"	CTR09-XX	22	2.5	\$80.07	\$52.05
10"	CTR10-XX	22	3.0	\$81.38	\$52.90
11"	CTR11-XX	22	3.5	\$95.87	\$62.32
12"	CTR12-XX	20	3.8	\$95.87	\$62.32
14"	CTR14-XX	20	4.5	\$114.29	\$74.29
16"	CTR16-XX	20	7.0	\$157.65	\$102.47
18"	CTR18-XX	20	21.0	\$165.18	\$107.37
20"	CTR20-XX	20	30.0	\$174.75	\$113.59
22"	CTR22-XX	20	39.5	\$199.11	\$129.42
24"	CTR24-XX	20	53.5	\$219.42	\$142.62

Reducer



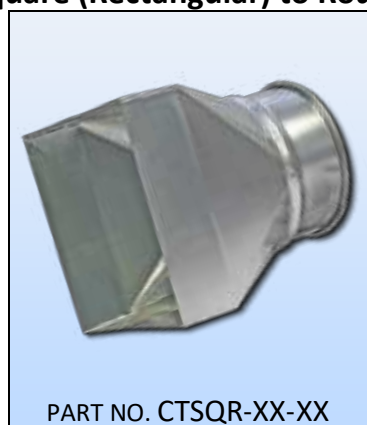
- Priced by largest end A
- Specify A, B, Diameter



SQUARE TO ROUND TRANSITION

SIZE	PART #	GA.	WT.	REG. PRICE	35% OFF
4"	CTSQ04-XX-XX	22	1.3	\$133.41	\$86.72
5"	CTSQ05-XX-XX	22	1.5	\$138.40	\$89.96
6"	CTSQ06-XX-XX	22	1.8	\$143.39	\$93.20
7"	CTSQ07-XX-XX	22	2.0	\$152.66	\$99.23
8"	CTSQ08-XX-XX	22	2.3	\$159.43	\$103.63
9"	CTSQ09-XX-XX	22	2.5	\$165.13	\$107.33
10"	CTSQ10-XX-XX	22	3.0	\$170.95	\$111.12
11"	CTSQ11-XX-XX	22	3.5	\$174.16	\$113.20
12"	CTSQ12-XX-XX	20	3.8	\$174.16	\$113.20
14"	CTSQ14-XX-XX	20	4.5	\$180.46	\$117.30
16"	CTSQ16-XX-XX	20	7.0	\$189.37	\$123.09
18"	CTSQ18-XX-XX	20	21.0	\$195.07	\$126.80
20"	CTSQ20-XX-XX	20	30.0	\$201.72	\$131.12
22"	CTSQ22-XX-XX	20	39.5	\$241.28	\$156.83
24"	CTSQ24-XX-XX	20	53.5	\$277.87	\$180.62

Square (Rectangular) to Round



- Priced by round end Dia.
- Specify A, B dimension
- Square (rectangular) ends to be approx. size of round end
- Standard with 2" skirt raw edge
- Angle flange available at additional cost

